

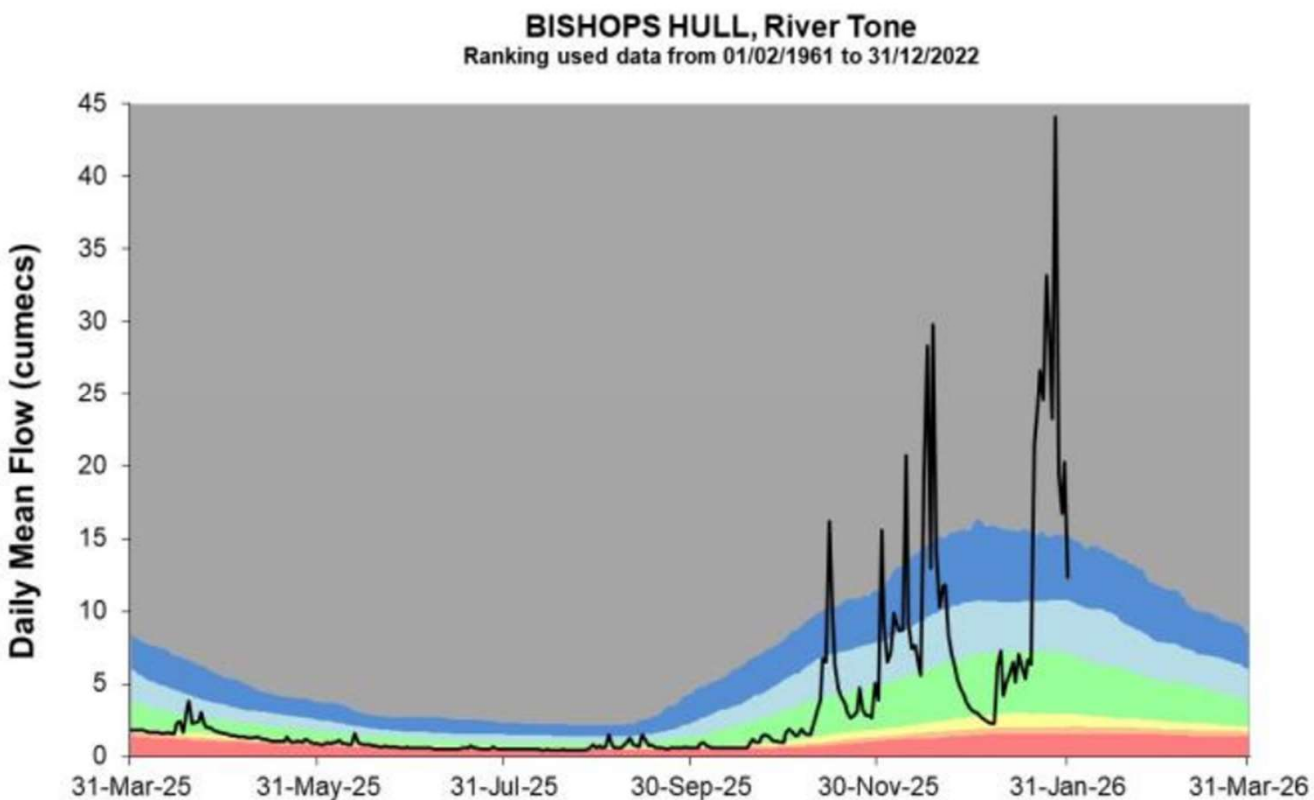


Ian Withers

Wessex Area Director

WessexEnquiries@environment-agency.gov.uk

A stormy and wet winter

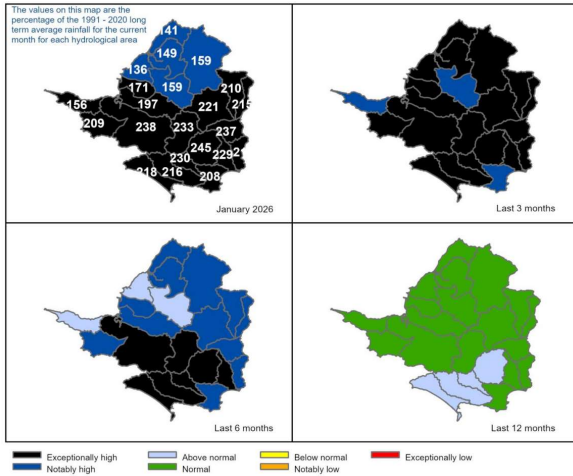


January 2026 was the second wettest on record (records go back to 1871) – second only to 2014. A third of this rain fell in only two days.

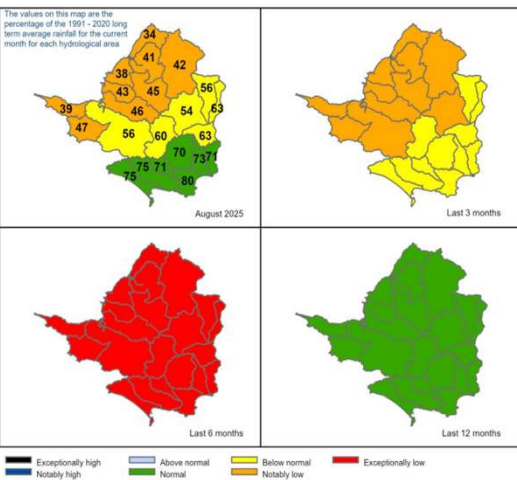
At the peak of Storm Chandra, 1.2 million cubic metres of water per hour was coming down the Parrett & Tone catchments.

February already had the month's normal rainfall by the 10th, and by the 19th had almost double the long-term average.

Weather extremes

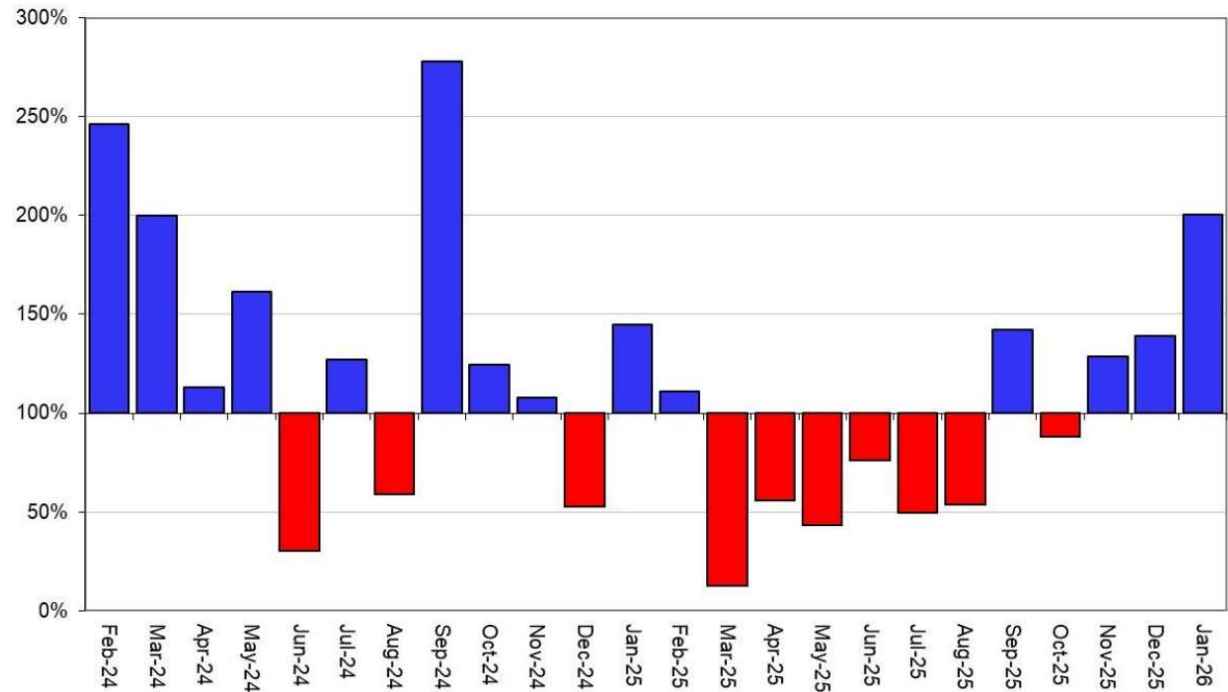


January 2026



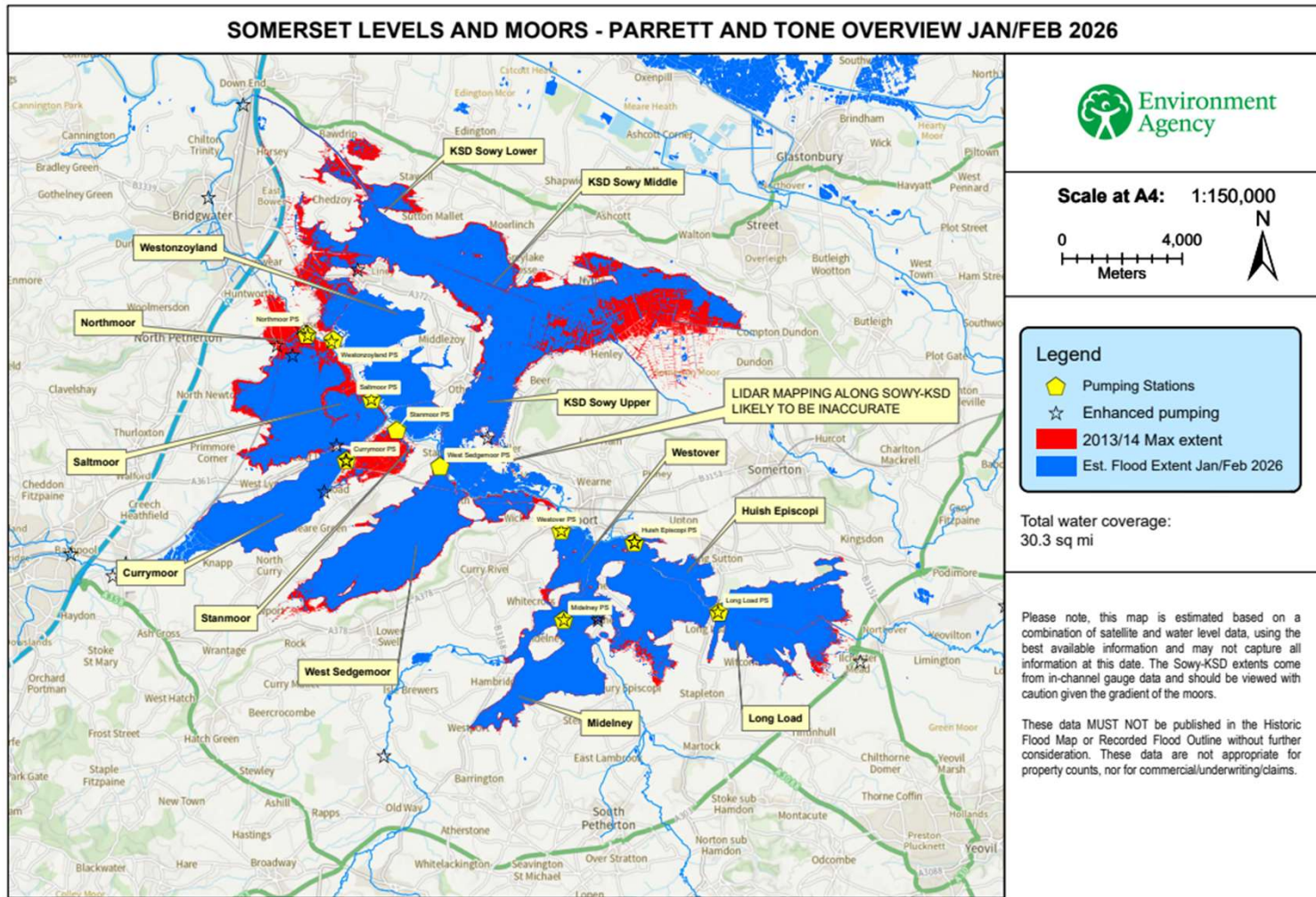
August 2025

1-Month Period for Wessex



Monthly Rainfall as % of Long Term Average

Flood extent



© Environment Agency copyright and database rights 2026. © Crown Copyright and database right 2026. Ordnance Survey licence number AC0000807064.

30 square miles was flooded at the peak.

Across Somerset, between 80-90 properties were recorded as flooded. Around 20 of these on the Somerset Levels and Moors.

2860 properties were protected by flood defences – 180 of these by pump deployment.

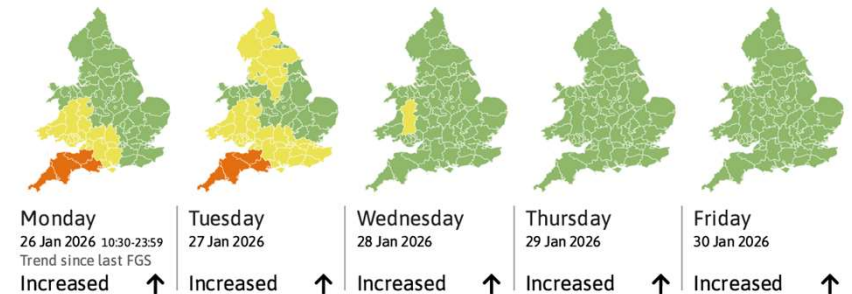
Operational response on the Somerset Levels and Moors

Trigger points

- Trigger points plan describes conditions for consideration of pump deployment
- Original plan anticipated 10 days from initiation to pumps being on
- Reviewed in 2023 for earlier activation and will be reviewed again after this event
- In this event, Currymoor went from empty to full in less than 4 days
- Deployment was initiated before trigger points were met
- Pump deployment is a significant investment

Flood Guidance Statement 10:30hrs Monday 26 January 2026

FLOOD FORECASTING CENTRE
A working partnership between Environment Agency | Met Office



 **Met Office** 
@metoffice · Follow

#StormChandra has been named and is forecast to bring strong winds and heavy rain to the UK on Tuesday ⚠️

Flooding and travel disruption is likely in places and there will also be some significant snow across higher ground in some northern areas ❄️

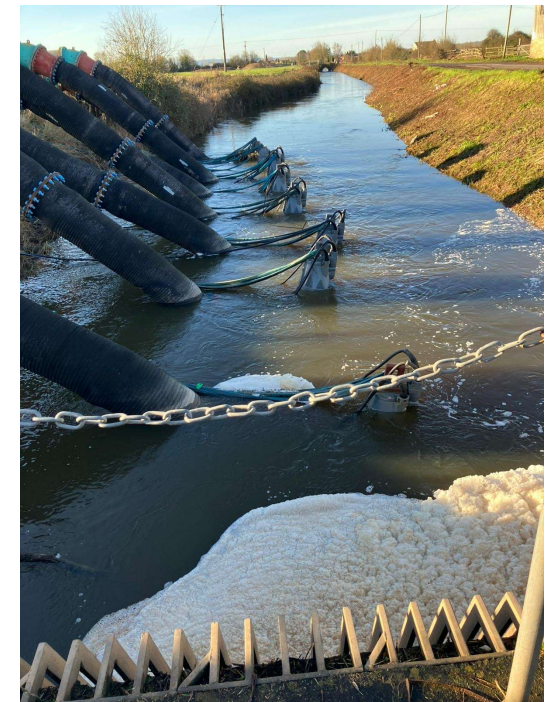
Pump deployment

- Pumps were deployed to 19 locations in this event
- 28 ultra-high-volume pumps, and a large number of smaller pumps
- A mix of national stock, locally owned pumps and hired equipment from framework contractors
- Pumps were installed in record time



Factors impacting pumping

- River levels need to have enough capacity to receive water
- All stations upstream of Burrowbridge were inhibited by high river levels
- We cannot pump if it will increase flood risk elsewhere
- Drains have to have enough water for submersible pumps



Reviewing our operational response

- There are always improvements that can be made
- The pumps at Saltmoor were delivered by framework contractors and we will review deployments with them
- Notification for residents about road closures when extra pumps were brought in was inadequate



Communications and Flood Warnings



National Context:

- Map shows a snapshot of Flood Warnings on Tuesday 27th January.
- Most in South-West England.
- 110 Flood Warnings at peak
- 3 Severe Flood Warnings in Dorset and Devon, indicating risk to life, were also issued to warn and protect communities

Flood Warnings



- The Flood Warning service is our primary communication channel.
- Flood Warning Officers are on duty 24/7, and warning information is updated regularly online.
- The Somerset Levels and Moors have unusual hydrological characteristics: wide floodplains, perched rivers, long duration flooding and an intensive management regime. These are challenging catchments for modelling and issuing Flood Warnings.
- We are always seeking to improve and feedback on Flood Warnings is welcome.

Community Engagement

- Somerset Levels and Moors communities receive additional briefings, unlike other areas
- Conversations with Parish Council and Flood Wardens
- Numerous residents phoned the incident hotline and spoke to duty officers
- Drop-in sessions were held including in Burrowbridge
- Flooding impacted many other communities in Somerset in this event – we sent staff out to a number of locations



Investment and changes since 2014

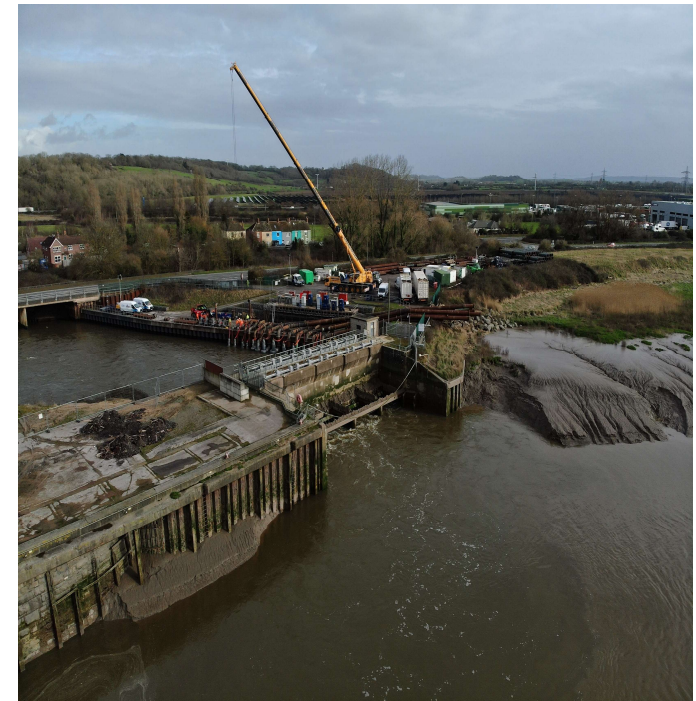
Improvements since 2014

- Since 2014, around £250 million has been spent in Somerset on reducing the impacts of flooding, including:
- Floodwater storage reservoir resilience
- Dredging and water injection dredging
- Road raising
- Upgrading pumping stations
- Natural Flood Management interventions in the upper catchments
- Refurbishing key assets such as Dunball Sluice
- This year, we have been able to deploy temporary pumps faster and get water away more quickly because of these improvements.



The Parrett Flood Relief Channel (Sowy / King's Sedgemoor Drain)

- We have been able to convey more water through the system following improvements.
- Flood alleviation schemes in Aller and Westonzoyland protect downstream properties.
- In flood conditions, spillways naturally fill the Sowy.
- We open Monksleaze Clyce to divert water down the Sowy from the Parrett.
- Dunball Sluice 22km downstream – pumps there only run 2-3 hours per day when the tide is in and tidal gates are closed. These take some pressure off lower part of system. Gravity drainage when gates are open discharges greater volumes.



Future investment

- We have secured £6 million in funding to replace old pumps at a number of pumping stations with modern, reliable electric pumps.
- Pumps are being upgraded at Midelney, Huish Episcopi, Northmoor and Westover
- These will have the same capacity as the existing pumps, as the buildings, electrical supply and drainage network are designed to this capacity.
- However, they will be more efficient and reliable than the older pumps.

Somerset Rivers Authority Investment

- £3 million per year invested in Somerset – much of this focused on Somerset Levels and Moors
- Internal Drainage Board have a de-silting programme funded by SRA
- Environment Agency permissive powers delegated through a public sector co-operation agreement



Watercourse maintenance

Main river maintenance

- The Environment Agency has Permissive Powers to carry out maintenance, improvement, or construction work on main rivers, but is not obliged to do so.
- The Environment Agency does not have a duty to carry out either maintenance or new works on main rivers.
- Funding for maintenance work is nationally allocated, and takes into consideration legal duties as well as where it will have the greatest benefit to flood risk, to better protect people, property, and wildlife.
- Attracting funding in Somerset is challenging due to sparsely populated landscape – despite this, Somerset has received a great deal of investment since 2014

Maintenance Programme

We use permissive powers to do weedcutting and vegetation management on main rivers. Every year in Somerset, we undertake at least 120km of machine channel clearance, and we inspect and operate hundreds of assets around the clock.



Dredging

- Since the floods of 2014, there has been a significant investment in dredging and desilting works.
- 95km of main river and main drains have been dredged including: the Penzoy, the Westonzoyland Engine Rhyne, Wickmoor Main Drain, Haymoor Main Drain, Northmoor Main Drain, Saltmoor Main Drain and Witcombe Bottom Main Drain.

Next Steps/ Future Investment

- Council undertake S19 reports
- Recovery team are in place
- Committed to reviewing:
 - trigger points
 - permanent pumps v temporary pumps
- We have secured £6 million in funding to replace old pumps with modern, more efficient & reliable electric pumps.
- Pumps being upgraded at Middelney, Huish Episcopi, Northmoor and Westover

Questions and answers

- Flooding in Somerset receives a high level of public and political interest
- We are still dealing with a very large volume of enquiries
- We have created a dedicated webpage with updates and FAQs
- Search ‘Somerset Flooding 2026’



Home / Somerset Flooding 2026

Somerset Flooding 2026

Somerset had the second wettest January on record with more than double the average rainfall. A third of this rain fell during Storm Chandra, which saw around 1.2 million cubic metres of water per hour moving through the Parrett and Tone catchments. Most of this water spilled into the floodplain of the Levels and Moors.

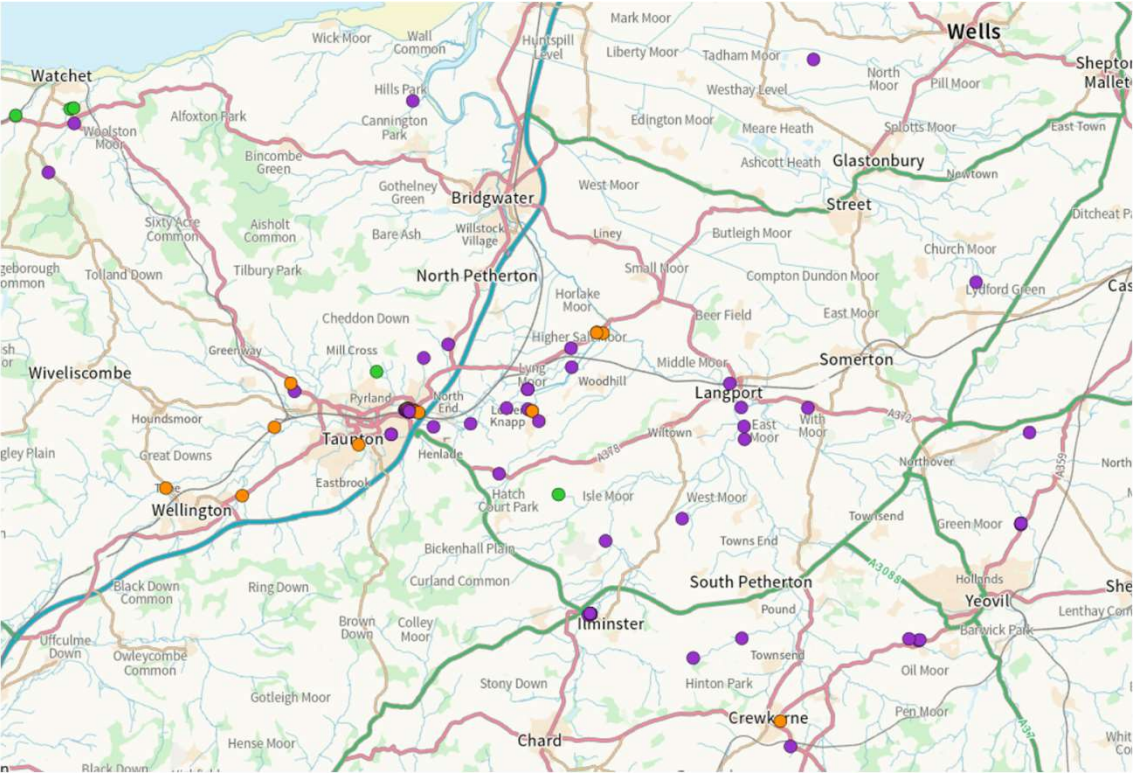
Wet weather continued into February, which had almost double the average rainfall by mid-month. Across the county, there have been widespread impacts from flooding.

Somerset Council declared a major incident on 27 January, with the support of the Environment Agency and Local Resilience Partners. You can read more via this link: [Somerset Council Newsroom](#). Although the major incident has since been stepped down, the Environment Agency continues to respond.

While pumping operations are active on the Somerset Levels and Moors, and while we are undertaking flood recovery activities, we will have this page live for updates, additional information and guidance. The latest updates can be found in the newsfeed at the bottom of this page.

A summary box titled 'Flooding in Somerset' with a timestamp 'Fri, 20 Mar 2026 12:03'. It contains three rows, each with a '0' and a triangle icon containing a water drop. The first row is labeled 'Severe Flood Warning', the second 'Flood Warning', and the third 'Flood Alert'. At the bottom of the box is a link that says 'Get flood warnings'.

Storm Chandra internally flooded properties reported



Mostly individual properties.
Small cluster in Bathpool area (Taunton).
Majority flooded for a few hours.



Multi-agency support on the ground across Somerset



Community
Information
Points



22 Multi-agency
Stakeholder
written briefings



Door knocking
to residents in
Flood Warning
areas



Regular
contact with
Flood Wardens



Rest Centre &
Evacuation
support & Search
and Rescue
Teams stood up



Flooded residents
re-housed where
required

Stakeholder Information Sheet

Latest updates from Somerset Council, the Environment Agency,
emergency services, NHS Somerset and partners

Date: 20 February 2026

To: All key stakeholders

Major incident and flood response update

Today we are issuing the final multi-agency update following the move to the recovery stage earlier this week.

The weather forecast remains changeable and water levels are still impacting on some local roads. Following the reopening of the A361 on the Levels yesterday (Thursday 19 February), there was fresh flooding to the road early this morning as a result of accumulated rain during the middle part of the week, causing the spillway once again to top over and the road had to be closed again today (Friday 20 February).

We anticipate this situation remaining in flux for the next few weeks until there is a sustained period of dry weather. As soon as it is safe for drivers the road will be reopened.

Meanwhile, pumping operations are continuing and water levels more generally are receding. See the Environment Agency update below for further details.

[Please view previous updates here.](#)

We are encouraging anybody affected by flooding to please report it here: [Flood report - Self Service.](#)

In an emergency residents should always call 999 immediately.



Residents seeking advice and information
outside Moorland Village Hall community
information point.

NEWS

Home | UK | World | Business | Culture | Politics | Health | Tech | InDepth | BBC Verify | Climate

England | Local News | Somerset

'I won't give up on flooded areas', says minister

Flood Minister visits Somerset
10 February
2026



04:28

Emma Hardy says Somerset will get £75m in flood support